



JUST THE FACTS

Your Source For Actuator Coverage



1050+

Part Numbers covering more than 197 Million VIO



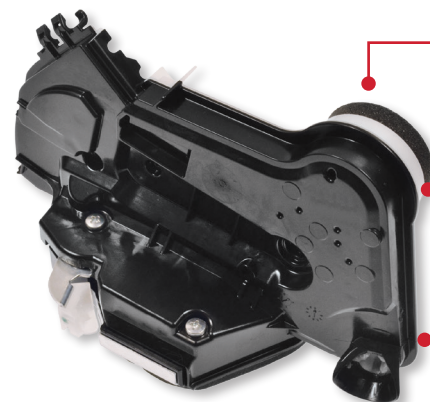
Growing line of integrated door lock, liftgate, tailgate, and trunk lock actuators



Meets Federal Motor Vehicle Safety Standards (FMVSS) requirements for door ejection safety

THE NEW NORM FOR DOOR LOCK ACTUATION

Integrated door lock actuators combine electrical actuation with latching mechanization. Standard® offers a line of Integrated Door Lock Actuators, all direct OE replacements that ensure proper fit, form, and function.



'Plug and play' design No additional programming required

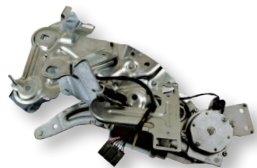
Meets FMVSS No. 206 requirements for door ejection safety

Robust construction ensures long, trouble-free service life

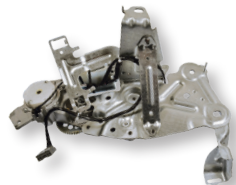
AFTERMARKET EXCLUSIVE

DLA1423
Lexus / Toyota (Left Front) (2019-14)
VIO Over 5 Million

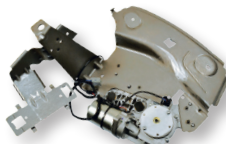
GROWING LINE OF DOOR LOCK, LIFTGATE, TAILGATE, AND TRUNK LOCK ACTUATORS



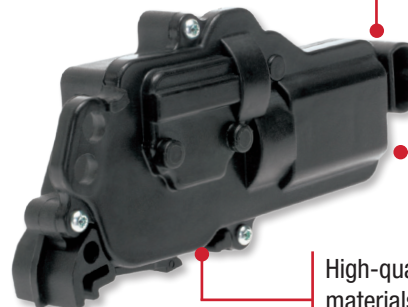
DLA1441
Cadillac / Chevrolet / GMC (2009-07)
VIO Over 1 million



DLA1442
Cadillac / Chevrolet / GMC (2014-10)
VIO Over 829,000



DLA1443
Buick / Chevrolet (2017-09)
VIO Over 1.3 Million



Direct-fit OE replacement ensures proper fit, form, and function for ease of installation

Undergoes extensive testing to ensure reliability

High-quality materials withstand extreme conditions

DLA144
Ford / Lincoln / Mercury (2017-99)
VIO Over 10.4 Million

When OE Fails, Trust Standard®

StandardBrand.com



Integrated Door Lock Actuators

'Plug and play' design means no wire splicing for easier installation

Robust construction ensures long, trouble-free service life

Meets FMVSS No. 206 requirements for door ejection safety

Designed and tested to OE specifications for a direct-fit replacement

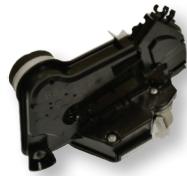
AFTERMARKET EXCLUSIVE

DLA1439
Honda Pilot (Front Left)
(2015-09)
VIO Over 780,000

First to Aftermarket



DLA1424
Lexus / Toyota (Right Front)
(2019-14)
VIO Over 5 Million



DLA1363
Toyota Corolla (2019-14)
VIO Over 2.05 Million



DLA1445
Cadillac / Chevy/ GMC (2015-12)
VIO Over 1.4 Million



DLA1413
Ford F-150 (Front Left)
(2019-18)
VIO Over 1.2 Million

Common Causes of Failure:

- Motor failure from wear-and-tear and carbon buildup
- Sustained exposure to long pulse radio frequency
- Damaged cable, which can damage actuator housing
- Internal circuitry failure from normal operation (3 years/36,000 miles)

Diagnosis Tips:

- Door lock that functions with passenger-side switch but not driver-side? It's likely the driver-side switch.
- Door lock that functions in only one direction? It's likely the door lock actuator.
- All door locks function in only one direction? It's likely the door lock switch.