

TIRE PRESSURE MONITORING SYSTEM (TPMS)

Highlights

- 1 Full line of OE-Match pre-programmed TPMS Sensors are ready-to-install right out of the box
- 2 QWIK-SENSOR® Multi-Frequency TPMS Sensors combine 314.9MHz - 434MHz applications into one single Sensor program
- 3 Our blended program offers 99% coverage plus a full line of service kits & TPMS tools



What's in your box?™



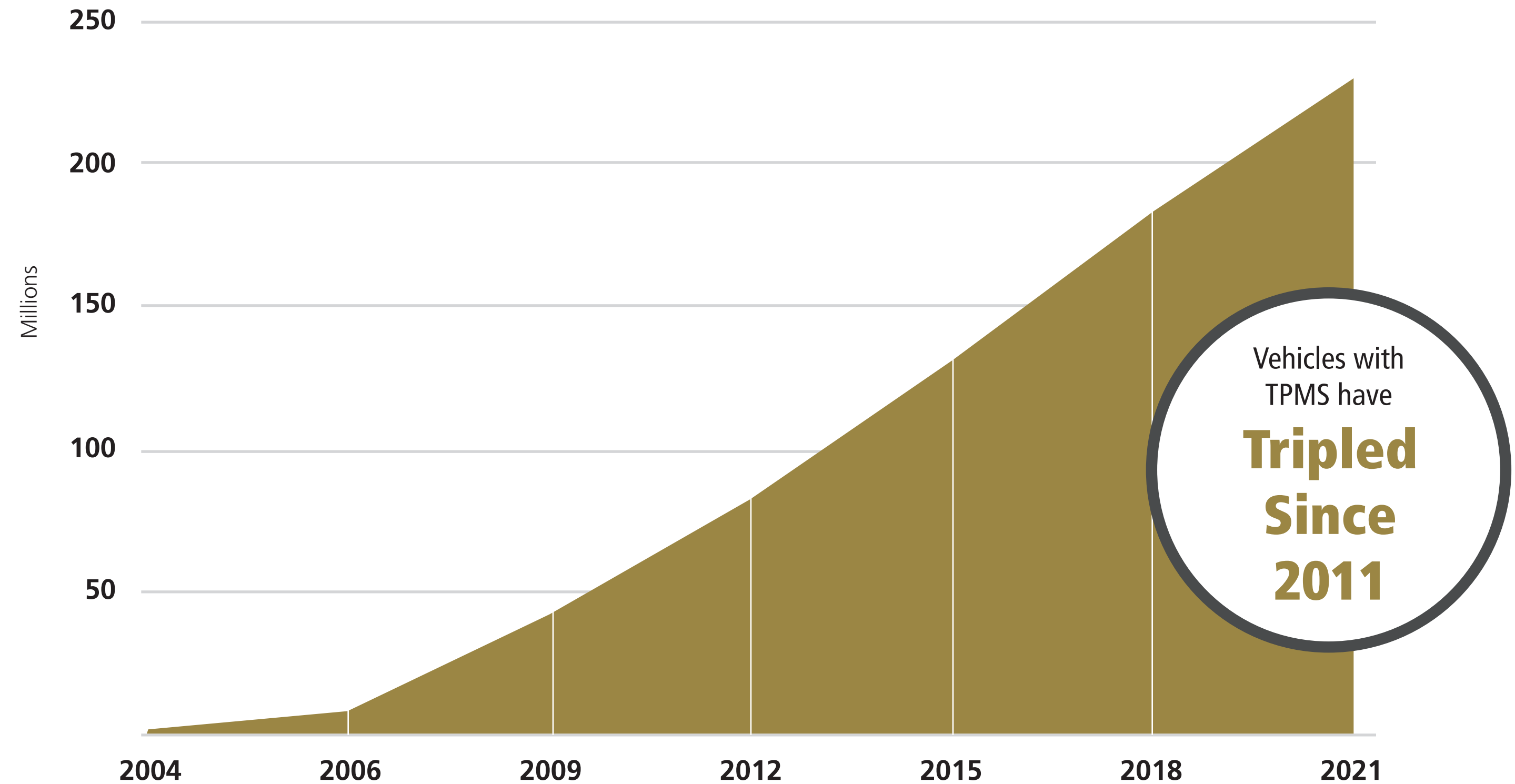
When OE Fails . . . Trust Standard®

StandardTPMS.com

Growing Market

Tire Pressure Monitoring Systems (TPMS) first started appearing on vehicles in 2004, and in 2008 it became mandatory that all new light vehicles sold in the U.S. have this important safety system.

Vehicles on the Road with TPMS Systems



Source: SMP Internal Data

Did You Know

TPMS sensors generally last 5-10 years before the original batteries fail. From 2013 to 2017, 84 million new TPMS-equipped vehicles were added to the road – that represents 336 million replacement opportunities (even more if the spare requires service).



TPMS SENSORS

Sales Opportunities

TPMS sensors are sealed units powered by batteries, with the typical lifespan of these batteries being 5-10 years. When new tires are being installed, reusing old sensors doesn't make sense, as they're susceptible to failure.

Standard® Pro Training Tip

Canned tire sealants can cause immediate damage to TPMS sensors. If any type of sealant has been used, a new TPMS sensor should be installed.

When it's time for the third set of tires, it's time for new TPMS sensors.



Original Set of Tires

On the vehicle from 0 to 35,000-50,000 miles or around 4-5 years



Second Set of Tires

On the vehicle until the odometer reads 75,000-100,000 miles or the vehicle has been on the road for 8-10 years



Third Set of Tires

Typically installed on an 8 to 10-year-old vehicle, when the TPMS Sensors are nearing the end of their service life

Change the TPMS sensors!



Impact on Vehicle Systems



Low air in a tire can lead to safety issues like the risk of hydroplaning, diminished brake performance, delayed steering response, and a chance of a blowout



Underinflated tires can cost a motorist more than \$200 more in fuel per year



A sensor relearn procedure should be performed on any vehicle with TPMS after every tire rotation or replacement

What's New

TPMS sensors have now become common vehicle safety equipment. Standard® is committed to regularly introducing new TPMS Sensors to cover new applications.

For the most recent applications, check the online catalog at StandardBrand.com.



TPM392
Dodge / Jeep SUVs
(2023-21)
VIO: 889K



TPM186A
Alfa Romeo Cars & SUVs
(2022-17)
VIO: 93K



TPM391
Acura / Honda Cars & SUVs
(2023-21)
VIO: 252K



Top Movers: TPMS Sensors

QWIK
sensor
MULTI-FREQUENCY
Programmable TPMS Sensors



QS106M
Multi-Frequency Universal
Metal Valve Stem



QS106R
Multi-Frequency Universal
Rubber Valve Stem



OE-Match
TPMS
SENSORS



TPM45RA
GM
Cars, Trucks & SUVs
(2020-04)



TPM82A
Lexus / Toyota
Cars, Trucks & SUVs
(2017-03)



TPM197RA
Chrysler, Dodge, Jeep, RAM
Cars, Trucks, & SUVs
(2021-10)



TPM106A
Honda / Acura
Cars & SUVs
(2017-08)



TPM199
Ford
Cars, Trucks & SUVs
(2022-15)



TPMS Sensors

StandardTPMS.com

Manufacturing

Standard® TPMS Sensors are designed and manufactured using the latest technology to meet OE performance in compliance with all SAE2657 specifications.

Every Sensor is precision engineered for application-specific operation and a long service life.



Did You Know

Our facility produces more than a million Sensors annually, earning international and national certifications including U.S. FCC, European E-Mark, Canada IC, and Taiwan NCC while meeting FMVSS138, SAE J2657, ISO9001, and IATF 16949 quality standards.



Testing and Validation

Each Standard® TPMS Sensor undergoes extensive testing to ensure performance and durability.

We subject our Sensors to SAEJ2657 certification standards including operational temperature, thermal shock, extreme temperature, humidity, frost, proof pressure, rapid deflation, contamination, salt fog, drop, centrifugal force vehicle speed, and mechanical vibration testing.

Did You Know

Our results are validated by live 168-hour on-vehicle testing at independent labs.

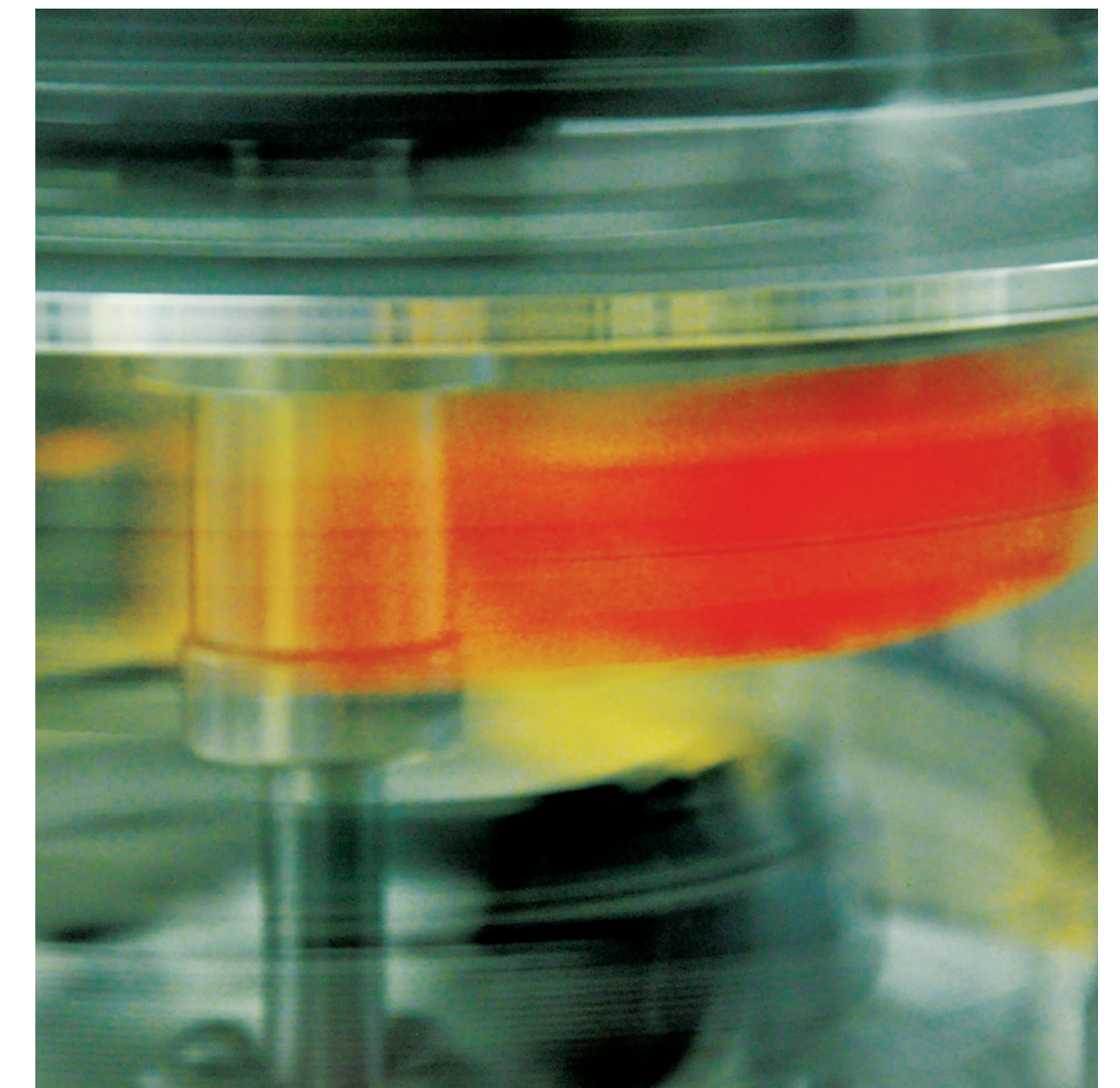
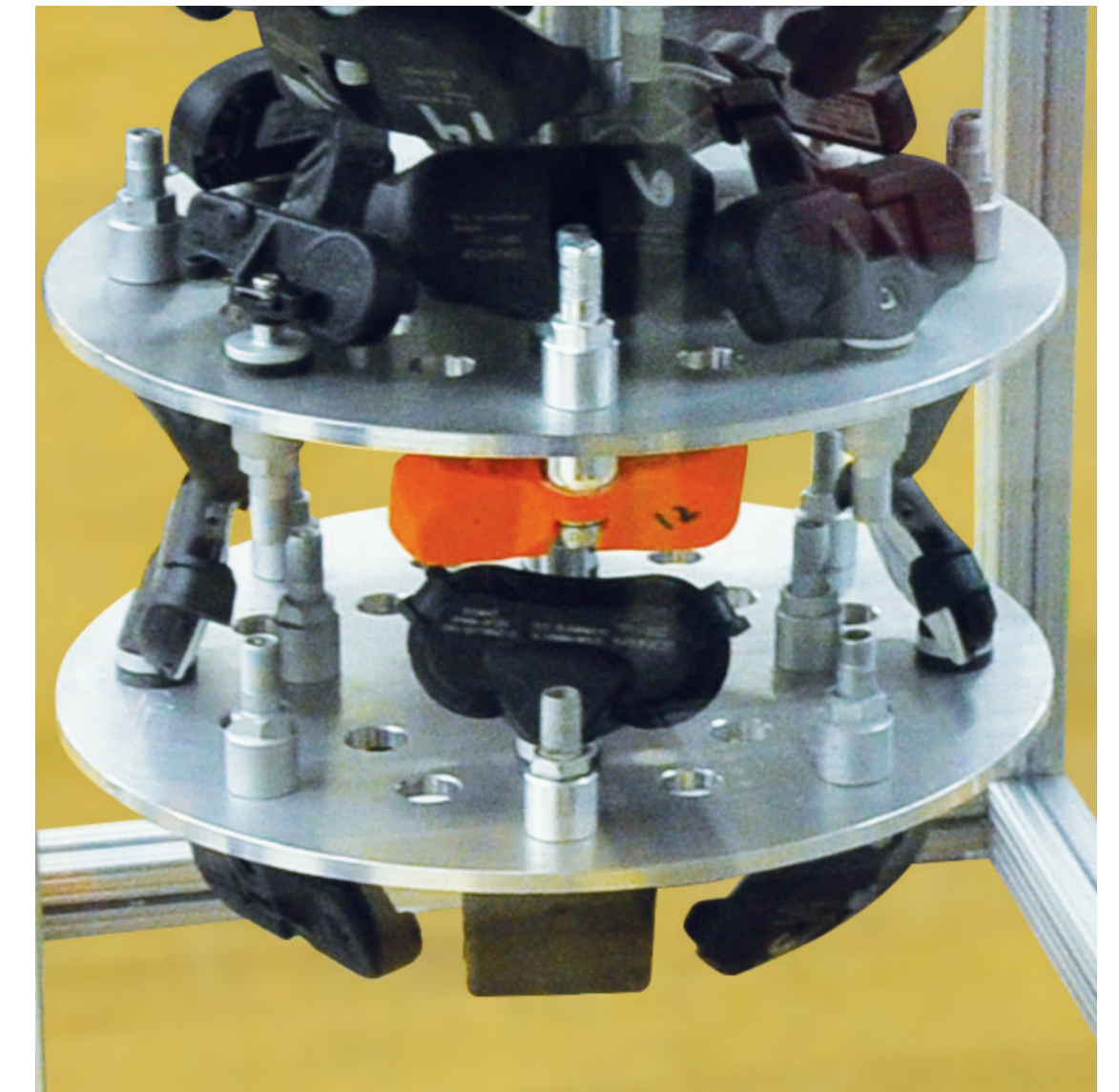
Standard® TPMS Accelerated Life Test

During normal usage, TPMS sensors are only active for a few hours per day. To make sure our sensor batteries last, we subject them to an Accelerated Life Test.

First, we load the TPMS Sensors in the testing chamber.

Next, we run the test 24 hours a day, 7 days a week.

The result is a TPMS sensor battery that lasts, keeping this important safety feature running.



Standard[®] Quality

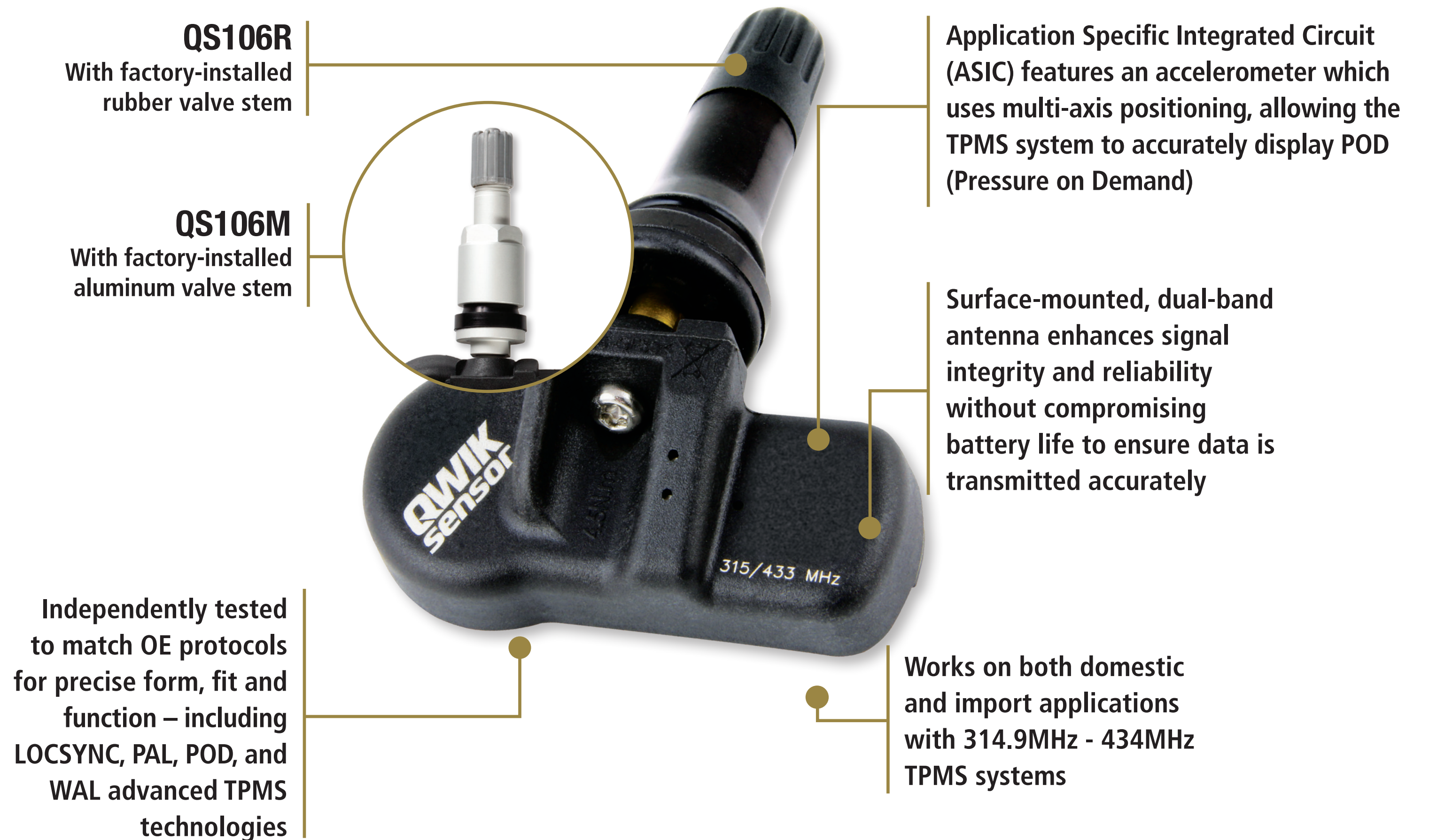
QWIK-SENSOR[®] Multi-Frequency TPMS Sensors combine all frequencies into a single sensor, eliminating duplication of inventory. Available with a factory-installed rubber or metal valve stem.

Faster programming times and longer battery life are enhancements engineered into the QS106.

Did You Know

The required sensor programming can be completed before or after installation, and while under pressure.

One Single Sensor is All You Need.



Standard[®] Quality

With more than 250 SKUs, Standard[®] OE-Matching TPMS Sensors provide 99% coverage – the best in the industry.

Pre-programmed from the factory with exact vehicle-specific OE application software, Standard[®] TPMS Sensors can be directly installed.

OE-Match, Ready-to-Install Right Out of the Box.

Military-grade lithium battery ensures maximum battery life and sensor performance

Compatible with OE valve stem rebuild kits and works with all major OE and aftermarket TPMS tools

TPM45RA
General Motors
(2020-04)



Pre-programmed at the factory with exact OE protocol, so it's ready to install out of the box

Direct-fit replacement matches the original for fit, form, and function

Some manufacturers use ABS wheel speed sensors to detect tire inflation changes - so check out Standard's ABS Sensor program



STANDARD® TPMS PROGRAM

Service Tools

In addition to the industry's strongest blended TPMS program, Standard® offers the right tools to program and service today's TPMS systems.

Did You Know

Standard® offers promotional TPMS Programming Tool Kit bundles that include our latest tools and advanced QWIK-SENSORS. Ask your Standard® representative for more information.



T57000

Programs popular universal and multi-coverage sensors

Integrated VIN scanner ensures application accuracy

Built-in TPMS relearn procedures speed-up the repair process

Hi-res color touch screen displays all sensor info on one screen

Reads and displays TPMS Diagnostic Trouble Codes (DTC)



T48000

Works with all Standard® OE-Match and QWIK-SENSOR® Multi-Frequency TPMS Sensors, as well as other popular universal and multi-coverage sensors

Comprehensive make, model, year-specific relearn procedures speed up repair process

Built-in OBD module for quick-connect cable and simple OBDII transfers – no additional accessories needed



Live Sensor Feature

Live Sensor Technology enables the Standard® team to update software as needed. Updates can be rolled out the same day, in as little as a few hours.

For example, a tech needed to program a sensor for a 2021 Toyota CH-R. This application was originally missing from the tool, but after a short review, our team was able to add the coverage, and the technician was able to program the sensor that same day.

Initial Release


2 Weeks Later

NOW WITH LIVE SENSOR DATABASE UPDATES

DATABASE VERSION:

: RA1-77-09

: RA1-77-11



NEW

1 SELECT PROGRAMMABLE SENSORS

ASure SENSOR	Duralast
Alligator Sens.it	Dynamic DVT Sensor
Alpha SENSOR	ECH/NAPA - OE/QMK
BH SENS IntelliSens	EZ-Sensor Schrader
BMO/STD - OE/QMK	EZPROIT
DIALYN SELECT SENSOR	Flex-Sens
DILL 5981/5982	Gussin
Direct Fit	MAX T.O.T.AL

2 SELECT PROGRAMMABLE SENSORS

ECH / NAPA OE-Design
ECH / NAPA QMK

1 SELECT PROGRAMMABLE SENSORS

ASure SENSOR	Duralast
Alligator Sens.it	Dynamic DVT Sensor
Alpha SENSOR	ECH/NAPA - OE/QMK
BH SENS IntelliSens	EZ-Sensor Schrader
BMO/STD - OE/QMK	EZPROIT
DIALYN SELECT SENSOR	Flex-Sens
DILL 5981/5982	Gussin
Direct Fit	MAX T.O.T.AL

2 SELECT PROGRAMMABLE SENSORS

ECH / NAPA OE-Design
ECH / NAPA QMK

3 VEHICLE SELECTION

SUBARU		
SUZUKI MOTOR		
TESLA		
TOYOTA		
VOLKSWAGEN		
VOLVO		
VPG		

4 TOYOTA

4 Runner	Land Cruiser	Sienna
86	Matrix	Solara
Avalon	Mirai	Tacoma
Camry	Prius	Tundra
Corolla	Prius C	Venza
FJ Cruiser	Prius V	Yaris
Highlander	RAV4	
	Sequoia	

3 VEHICLE SELECTION

SUBARU		
SUZUKI MOTOR		
TESLA		
TOYOTA		
VOLKSWAGEN		
VOLVO		
VPG		

4 TOYOTA

4 Runner	Land Cruiser	Sienna
86	Matrix	Solara
Avalon	Mirai	Tacoma
Camry	Prius	Tundra
Corolla	Prius C	Venza
FJ Cruiser	Prius V	Yaris
Highlander	RAV4	
	Sequoia	

5 TOYOTA/C-HR

2017
2018
2019

2019 is Latest one in this Older Database

6 TOYOTA/C-HR/2019

Use 92-4003(Green), 92-4005(315)

5 TOYOTA/C-HR

After LIVE UPDATE

2017
2018
2019
2020
2021

2020-21 are Now in this Database

6 TOYOTA/C-HR/2021

Use 92-4006



STANDARD® TPMS SENSORS

Related Parts

In addition to QWIK-SENSORS and our OE-Match Sensor line, Standard® also provides technicians with all necessary TPMS service items such as individual, application-specific service kits plus bulk packs of valve stems, cores, and more.

We also offer TPMS Service and Valve Kit Assortments, providing technicians with the most popular components for a complete repair solution.



OE-Design TPMS Sensor Service Kits

Application-specific, these kits typically include a valve core, seal, washer, retaining nut, and cap

50+ SKUs available



QWIK-SENSOR® TPMS Sensor Service Kits

Specifically designed for our multi-frequency Sensor, these kits include all necessary service components



TPMS Valves

68 SKUs available for QWIK-SENSOR® and OE-Match Sensors

Bolt-on installation



Tire Pressure Monitoring Valve Cores

Electroless nickel-plated construction

Sold in packs of 100



Valve Caps

Available in black or grey

Sold in packs of 100



TPMS Sensor Cradle

Bracket to mount TPMS Sensor on Ford / Lincoln / Mercury wheels up to 2011



Standard® Pro Training Tech Tip

Every time a tire is removed from the wheel, the TPMS service parts such as valve stems, seals, nuts, washers, valve cores, and caps should be replaced, as these parts are all exposed to extreme weather, corrosion, and aging.

Standard® Pro Training Tip

A relearn should also be done each time tires are reinstalled to ensure that the proper tire location is detected.

TPMS Service Kits



TPM6201SK
Service Kit Assortment



TPM6202VK
Valve Kit Assortment



TPM5020
Tire Pressure Monitoring
System Tool

Standard® TPMS Service Kit Assortments and Tool Kits

TPMS Service Kit Assortments from Standard® include the most popular service and valve kits, including valve stem rebuild kits, nickel-plated valve cores, valve caps, and valve core torque tools. Standard® also offers TPMS Tool Kits like TPM5020 for an easy TPMS service.



Standard® Professional Training

Award-Winning In-Person, Live Virtual, and Online Learning

Standard® Pro Training delivers accredited classes that educate technicians in the latest automotive repair technologies, and techs can earn CEU credits.

An extension of Standard® training, our extensive YouTube video library has over 500 technical and installation videos.



Available Classes

TPMS Diagnosis and Learning

TPMS Fundamentals



Available Classes

Body Control Electronics Diagnosis



For information on replacing TPMS and related components, search “TPMS” on the **StandardBrand** YouTube channel

VSPG_2023_TPMS_7-26

